

silvio ferraz

# responsório de domingo de ramos

per violoncello solo e orchestra

Partitura

*in memoriam eduardo guimarães álvares*

## Orchestra

2 flutes in C

2 clarinets in Bb

2 horns in F

2 trumpets in C

2 trombones

percussion: 1 large or medium tam-tam; 1 thailandese medium gong

first violins I. II. III

second violins I, II, III

alto, I and II

cello I and II

double bass I and II

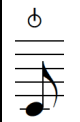
cello solo

(transposed score)

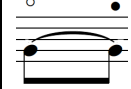
special notation  
winds



aeolian sound, *soffiato*



slap tong or tong ram



measured change of key position,  
*bisbigliando mensurato*

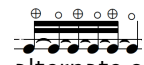


not measured *bisbigliando*

brasses

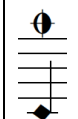


aeolian sound, *soffiato*

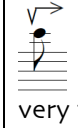


alternate open and close wawa mute

strings



muffled sound; played with harmonic pressure  
and muffled with fingers between harmonic  
and top nut



very fast bowing



Bartok pizzicato



fast and strong crescendo to fortissimo



alternate harmonic and normal finger pressure

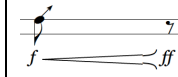


diamond s indicates harmonic finger pressure,  
even in non harmonic position (it sounds like a  
irregular multiphonics)



strong *getato*

percussion



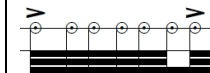
scraping along the tam-tam surface, in a  
crescendo figure



played with normal stick at the center of the  
instrument



on the tam-tam, play at the superior and bottom  
edge (rim)



play using fingers, between the center and edge  
of the instrument



This page of the musical score contains the following parts and markings:

- Flute (Fl.):** Two staves. The first staff has a *pp* dynamic and a 7-measure rest. The second staff has a *pp* dynamic, a 3-measure rest, and then a *legato* section with a 5-measure rest.
- Clarinet (Cl.):** Two staves. The first staff has a *pp* dynamic and a *legato* marking. The second staff has a *pp* dynamic and a *legato* marking. Both staves feature complex rhythmic patterns with rests of 5:4, 6:4, and 3:2 measures.
- Percussion (Perc.):** A single staff with a *f* dynamic and a *ff* dynamic, featuring a 3-measure rest.
- Violoncello (Vc.):** A single staff with a *simile* marking, a *ff* dynamic, and a *mf* dynamic. It includes a 3-measure rest and a 6-measure rest.
- Violin (Vln. I, Vln. II):** Six staves. The first Vln. I staff has a *pp* dynamic and a *pont.* marking. The first Vln. II staff has a *pp* dynamic and a *pont.* marking. The second Vln. II staff has a *V* marking. All violin parts feature a 6:4 measure rest.
- Viola (Vla.):** Two staves. The first staff has a *V* marking. The second staff has a *V* marking.
- Violoncello (Vc.):** Two staves. The first staff has a *pont.* marking and a *ord.* marking. The second staff has a *pont.* marking and a *ord.* marking. Both staves feature a *f* dynamic and a *pp* dynamic.
- Double Bass (Cb.):** Two staves. Both staves have a *norm.* marking.

Fl. Fl. Cl. Cl. Hn. C Tpt. B. Tbn. Perc. Vc. Vln. I Vln. I Vln. I Vln. II Vln. II Vla. Vla. Vc. Vc. Cb. Cb.

*seco*

*ff* *mf* *détaché* *ord.* *p* *pp* *ppp* *altri* *pont.* *mp > pp* *pp* *arco* *pp* *arco sul D* *pont. ord. pont.* *pont. ord. pont. ord. pont.*

Detailed description of the musical score: This page contains a full orchestral score for 20 measures. The instruments listed on the left are Flute (Fl.), Clarinet (Cl.), Horn (Hn.), C Trumpet (C Tpt.), Bass Trombone (B. Tbn.), Percussion (Perc.), Violoncello (Vc.), Violin I (Vln. I), Violin II (Vln. II), Viola (Vla.), and Double Bass (Cb.). The percussion part starts with a 'seco' instruction. The Violoncello part features a complex rhythmic pattern with dynamic markings of *ff* and *mf*, and includes the instruction 'détaché'. The Violin I parts have a melodic line with 'ord.' and 'p' markings, and later 'pp' and 'ppp' markings, with the instruction 'altri' appearing above the staff. The Violin II parts have a melodic line with 'ord.' and 'p' markings, and later 'pp' and 'mp > pp' markings, with 'pont.' markings above the staff. The Viola part has a melodic line with 'ord.' and 'p' markings, and later 'pp' and 'arco' markings. The Double Bass part has a melodic line with 'arco sul D' and 'pont. ord. pont.' markings. The score is written in a common time signature and includes various musical notations such as slurs, accents, and dynamic markings.

Fl. Fl. Cl. Cl. Hn. C Tpt. B. Tbn. Perc. Vc. Vln. I Vln. I Vln. I Vln. II Vln. II Vla. Vla. Vc. Vc. Cb. Cb.

*con sord*  
*triangle stick on the rim*  
*Sul C (multiphonic)*  
*pp*  
*mf*  
*mp*  
*p*  
*forte*  
*due corde*  
*flautato*  
*simile*  
*pp*  
*pont*  
*ord.*  
*pont. ord. pont.*  
*ord.*  
*pont.*  
*pont. ord. pont.*  
*ord.*  
*raspate*  
*3*  
*3:2*  
*3:2*  
*3:2*  
*3*  
*II III II III II*  
*simile*



35

40

This musical score page covers measures 35 to 40. The instruments and their parts are as follows:

- Flutes (Fl.):** Four parts. Measures 35-36 feature *sff* dynamics. Measures 37-40 feature *pp* dynamics with triplets and quintuplets.
- Clarinet (Cl.):** Two parts. Measures 35-36 feature *sff* dynamics. Measures 37-40 feature *pp* dynamics with triplets.
- Horn (Hn.):** One part. Measures 35-36 feature *sff* dynamics. Measure 37 includes the instruction "waw sord." (without sordano).
- Trumpet (C Tpt.):** One part. Measures 35-36 feature *pp* dynamics. Measures 37-40 feature *sff* dynamics with triplets.
- Trombone (B. Tbn.):** One part. Measures 35-36 feature *pp* dynamics. Measures 37-40 feature *sff* dynamics with triplets. Includes the instruction "senza sord" (without sordano).
- Percussion (Perc.):** One part. Measures 35-36 feature *ff* dynamics. Measures 37-40 feature *ff* dynamics.
- Violin (Vln. I, Vln. II):** Four parts. Measures 35-36 feature *pp* dynamics. Measures 37-40 feature *sff* dynamics with triplets. Includes the instruction "changing finger pressure" for Vln. II.
- Viola (Vla.):** Two parts. Measures 35-36 feature *pp* dynamics. Measures 37-40 feature *p* dynamics.
- Cello (Vc.):** Two parts. Measures 35-36 feature *pp* dynamics. Measures 37-40 feature *p* dynamics.
- Double Bass (Cb.):** Two parts. Measures 35-36 feature *sff* dynamics. Measures 37-40 feature *sff* dynamics.

Additional performance instructions include "molto vib" (molto vibrato) for the Violin I part in measure 40, and various dynamic markings such as *pp*, *sff*, *ff*, *mp*, and *f*.



60 65 70

Fl. *p*

Fl. *p < >*

Cl. *p*

Cl. *p*

Hn.

C Tpt.

B. Tbn. *pp* *pp* 1.

Perc.

Vc. *pp*

Vln. I *pp* *pont* *pp* *tutti*

Vln. I *pp* *pont* *pp*

Vln. I *pp* *pont* *pp* *tutti*

Vln. II *pp* *pont* *pp* *tutti*

Vln. II *pp* *pont* *pp*

Vln. II *pp* *pont* *pp*

Vla. *pp* *tutti*

Vla. *pp* *tutti*

Vc. *pp* *tutti*

Vc. *pp* *tutti*

Cb. *pp* *tutti*

Cb. *pp* *tutti*

Fl. *ff* 3

Fl. *ff* 3

Cl. *ff* 3

Cl. *ff* 3

Hn. *ff* 3

C Tpt. *ff* 3

B. Tbn. *ff* 3

Perc. *ff* 3 *fast circular movement with super ball*

Vc. *arco getato forte* *arco ord. poco sul tasto*

Vln. I *pont. 6:4* *p* *6:4* *6:4* *6:4* *6:4* *6:4* *solo a 2 6:4* *solo*

Vln. I *a 2* *p* *6:4* *6:4* *solo 6:4* *solo* *6:4* *pont*

Vln. I *p* *6:4* *6:4* *solo 6:4* *solo* *6:4* *pont*

Vln. II *pont. p* *6:4* *6:4* *7:4* *5:4* *a 2* *p* *6:4* *6:4* *solo 6:4* *f fp* *pont*

Vln. II *p* *6:4* *6:4* *solo 6:4* *solo* *6:4* *pont*

Vla. *pont. p* *6:4* *6:4* *5:4* *f* *solo mp* *ff* *pont*

Vla. *pont*

Vc. *pont*

Vc. *pont*

Cb. *arco* *pont --> ord.* *ff > p* *III<sup>a</sup>* *a 2*

Cb. *pp*

fl. *frul.* *fpp* *frul.* *fpp* *frul.* *frul.* *fpp* *frul.* *fpp* *frul.*

Cl. *ff* *ff*

Hn. *ff*

C Tpt. *ff*

B. Tbn. *ff*

Perc. *f* *f* *mp*

Vc. *ppp* *pp* *II<sup>a</sup> ord. arco lento, poco écrasé* *pp* *III<sup>a</sup> ord. arco lento, poco écrasé* *pp*

Vln. I *sfff* *pont* *sfff*

Vln. I *sfff* *pont* *sfff*

Vln. I *sfff* *pont* *sfff*

Vln. II *sfff* *pont* *sfff*

Vln. II *sfff* *pont* *sfff*

Vln. II *sfff* *pont* *sfff*

Vla. *ppp*

Vc. *ppp* *pont* *sfff* *pp*

Vc. *sfff* *pont* *sfff* *pp*

Cb. *sfff* *sfff*

Cb. *sfff* *sfff*

*p*

Fl. *forte e deciso*  
*ff*

Fl. *ff*

Cl. *ff*

Cl. *ff*

Hn. *ff*

C Tpt. *ff*

B. Tbn. *ff*

Perc. **II**

Vc. *mp espressivo*

*mp*

*ff*

*ff*

*ff*

*ff*

*mp*

*ff*

*arco flautato lento*

*pont.*

*tasto*

Vln. I *forte e deciso*  
*ff*

Vln. I *ff*

Vln. I *ff*

Vln. II *ff*

Vln. II *forte e deciso*  
*ff*

Vln. II *ff*

Vla. *ff*

Vla. *ff*

Vc. *ff*

Vc. *ff*

Cb. *ff*

Cb. *mf*

**Perc.**  
on the tamtam, with finger  
rasp. metal stick  
seco

**Vc.**  
pont.  
ord.  
f  
f ppp

**Vln. I**  
**Vln. II**  
**Vla.**  
**Vc.**  
**Cb.**  
pp

**Hn.**  
**C Tpt.**  
**B. Tbn.**  
*a2  
senza sord.*  
pp

This page of a musical score features the Percussion and Viola parts. The Percussion part includes instructions for playing on a tamtam with a finger and using a rasp metal stick. The Viola part is marked with dynamic levels such as *f* and *ppp*, and includes performance markings like *pont.* and *ord.*. The score also includes staves for other instruments like Horns, Trumpets, Trombones, Violins, and Cellos, though they are mostly silent on this page. The page number 110 is indicated in the top right, and the rehearsal mark 'a2' appears at the beginning of the section.